

Aviosys - Shutdown On Lan

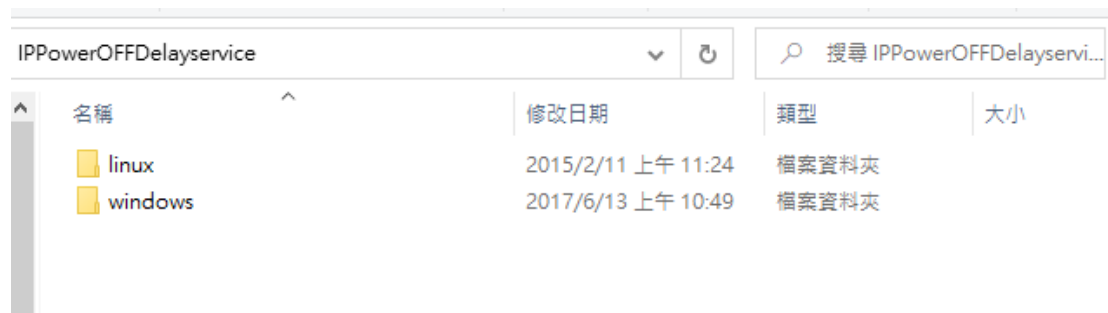
Installation manual Ver.1.0

This manual only provides the procedure for installing and the basic operation of Shutdown On Lan. If you require this function, please contact us through customer service.

Customer service link: <https://www.aviosys.com/products/contactus.html>

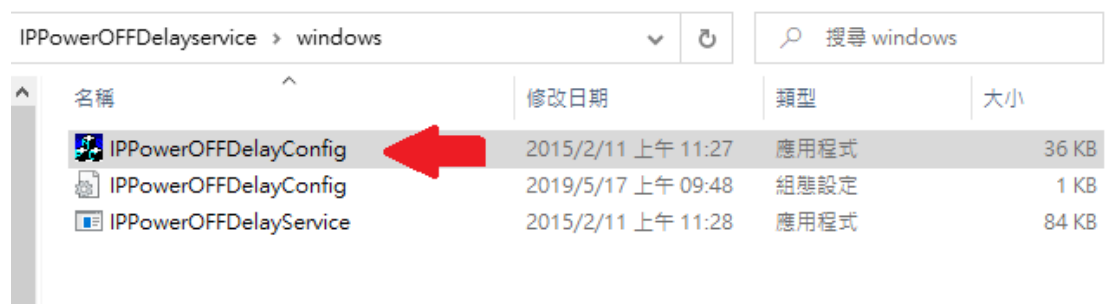
Shutdown On Lan activation procedure:

1. Unzip the "Shutdown_On_Lan.zip" file.
2. Click the "IPPowerOFFDelayService" file.
3. There are two files in the "IPPowerOFFDelayService", choose Linux or Windows file by the OS you are using.



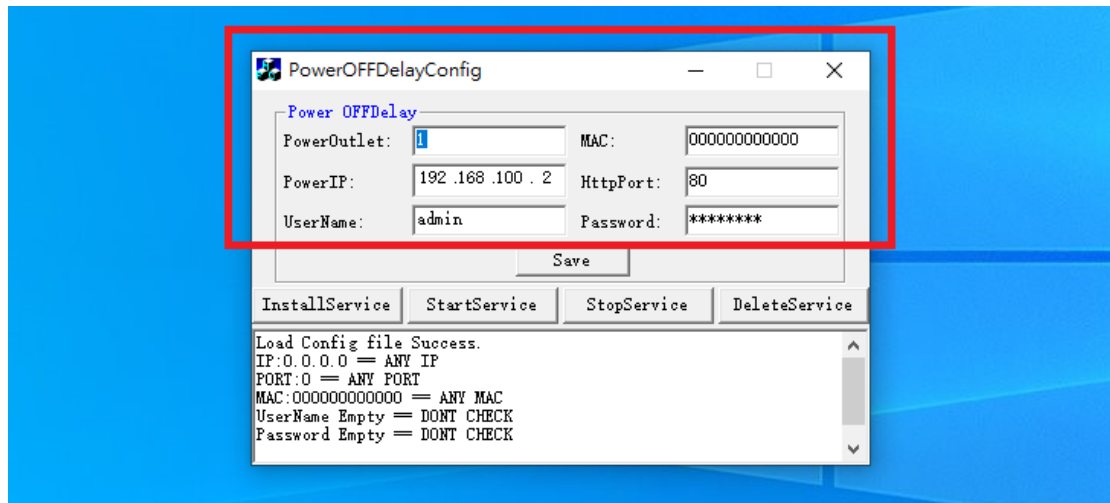
4. We take the example of Windows files, click to the windows and run the "IPPowerOFFDelayConfig" file as picture shown.

Note: Please click right bottom first and click " **Run as system administrator** ". The application run must through this step!!!!
If you don't run through **administrator**, it can't run functionally.



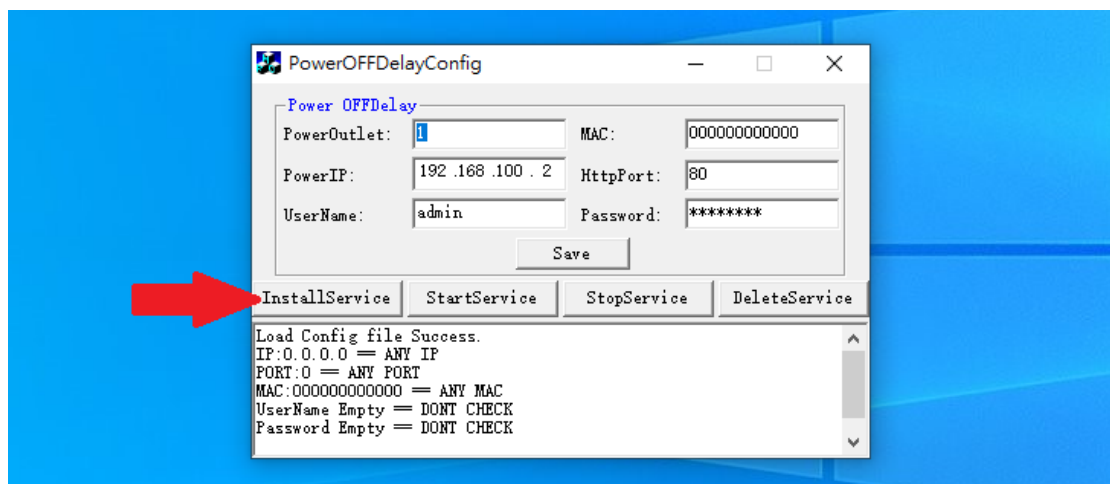
5. After opening the "IPPowerOFFDelayService", please setting your device in the Power OFF Delay as the red square shown.

You can find your IP, HttpPort and MAC through your device's webpage (in System-Information and Network-Setting)



6. After you finish the setting, please click save first, and then click the Install Service and Start Service.

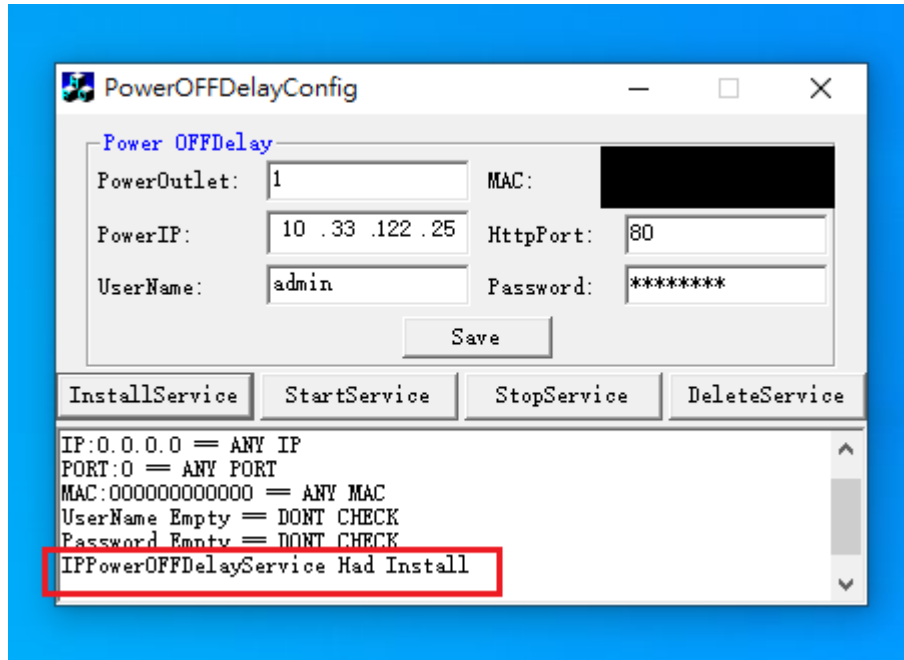
You can change your PowerOutlet anytime.



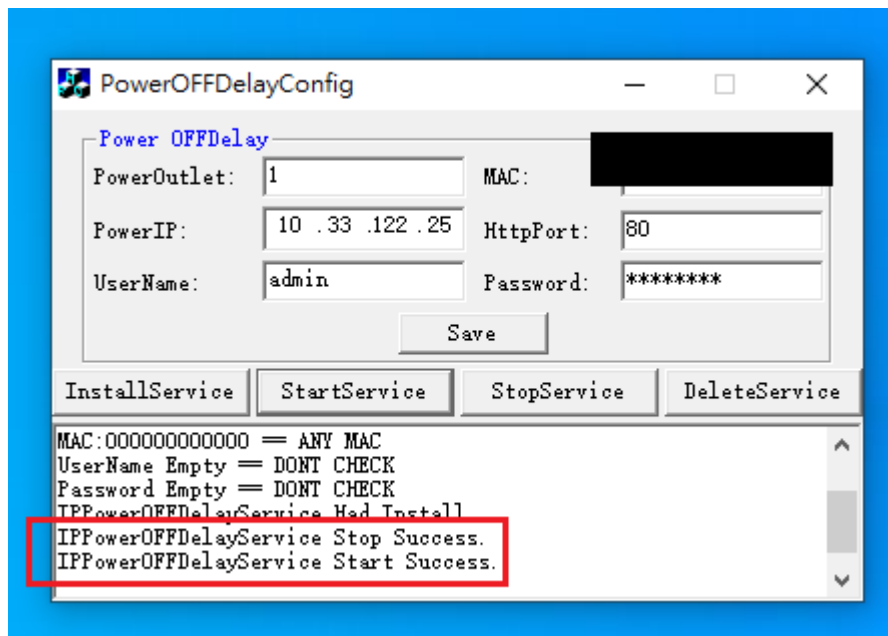
P.S: If you want to delete the IP Power device to change another device in your PC, just click the "DeleteService".

7. If it runs SOL successfully, it will be shown like the picture below:

7-1 pic



7-2 pic



Copyright © 2024 Aviosys All rights reserved. No part of this publication may be reproduced, stored in a retrieval system, or transmitted in any form or by any means, electronic, mechanical, photocopying, recording or otherwise, without the prior written consent of us.

All trademarks and products mentioned in this document are the properties of us.